

EASYdin ED240 – 110

DIN RAIL MOUNT CONFIGURATION INSTRUCTIONS

1/ The ED240-110 is shipped configured as per the box label but, may be re-configured as follows **before connection of mains power**.

HOWEVER STEP 3 MUST ALWAYS BE DONE

2/ **With power disconnected** remove the top cover plate by gently levering at the edge slot.



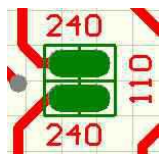
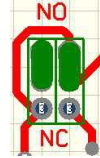
NC operation

Fit both links as shown at left



NO operation

Fit both links as shown at right



240 volt operation

Fit **both** links as shown at left

110 volt operation

Fit **one only** link as shown at right



3/ Strike out on the label the voltage description **NOT SELECTED**.

4/ **Re-seat the top cover plate before connection of mains power**

INSTALLATION INSTRUCTIONS

- 1/ Connect incoming Line to terminal **LINE IN L**, and Neutral to a **NEUTRAL COMMON N** terminal.
- 2a/ For NO operation the LED must be **GREEN** (input on) and **LINE OUT NO** terminal de-energised.
- 2b/ For NC operation the LED must be **RED** (active out) and **LINE OUT NC** terminal energised.
- 3/ If the configured condition is not present disconnect and return to supplier.
- 4/ Apply a trigger signal or short directly to the control terminals OC and OV of the EASYdin
- 5a/ For NO operation the LED must be **RED** (active out) and **LINE OUT NO** terminal energised.
- 5b/ For NC operation the LED must be **GREEN** (input on) and **LINE OUT NC** terminal de-energised.
- 6/ If the configured condition is not present disconnect and return to supplier.
- 7/ Connect the required **LINE OUT NC** or **NO** and unused **NEUTRAL COMMON N** to the controlled load.
- 8/ Attach bell wire, signal wire or similar to the control contacts screw terminals.
- 9/ Run the control wire to the remote switching location and connect to volts free switch mechanism.
- 10/ If using an open collector transistor switch, connect the collector to the terminal marked O.C. and the common rail to the terminal marked OV.
- 11/ If using 5, 12 or 24 volt triggering connect the + signal to the terminal marked O.C. and the common rail to the terminal marked OV
- 12/ Verify correct operation with remote switching.

SPECIFICATIONS

Weight: 310 grams (11oz) boxed
Size: 98mm (3.85in) x 53mm (2.09in) x 58mm (2.28in)
LED Indicator: Green = Mains input on, Red = Mains active out.
Electrical life: 1 x 10⁵operations @ 240V, 16A, resistive load.
DERATE accordingly for inductive and capacitive loads
Contact capacity: Inrush peak currents up to 80A max 20ms.
Control line requirements: 24VDC open circuit and 3mA



www.booleanengineering.com

OTHER MODELS

ES240-110-xV, EASYswitch operated by 5V, 12V or 24V signal instead of contacts.

ES240-110-PFD, EASYswitch with power fail detect output.

ES240-110-SK, EASYswitch with security key protected operation.

[MORE OVER HERE](#)



ES240-RCBO Overload and Safety Device

The ES240-RCBO is an inline switch protecting both equipment and personnel. With a 10 amp circuit breaker and 30 ma Earth Leakage Safety Switch (RCBO). No electrician is needed, as mains power connections are via IEC connectors. Prevents one faulty device bringing down all mission critical connected equipment. Know exactly which circuit to troubleshoot whilst others remain on line. The ES240-RCBO individually protects each circuit and the equipment user.



USB RS232 or RS485 Controlled Relay

The EC - 3 is a solid state relay controlled over serial communications links. Simple 10 character ASCII command sent over RS232, RS485 or USB link. Address selection and 3 Operating modes for maximum user flexibility. Software Serial Control of A/V, process, industrial, automation Equipment. Diagnostic report sent back after every operation for logging and control. User controlled operation for Turn on/Turn/off delays and state Duration.



Large Trending 4 - 20 ma Display

1 metre long Multi colour high Visibility LED Linear display of Trending Data. Displays current State of 4 -20 ma delivered information Stream. USB echo of operation for logging with simple serial terminal software. High/Low Set point, loop fail etc. with alarm relay and LED flashing. LED display Densities of 30, 60 or 120 cells per Metre length options. Adds Clarity and Intelligence to Large Format display of Control Systems.



Shielded Mains Lead

Audiophile grade Shielded Mains Power leads with IEC Connectors. Heavy Duty wires with Armoured Steel Shield conducted to Mains Earth. Powdered Iron Torroid absorbs interference at Equipment Entry point. Protect and Enhance Theatre, Hi Fi, PRO AV and Commercial systems. Custom lengths available of this Continental style Flexible mains Cable. A simple upgrade to allow professional performance at a realistic price.